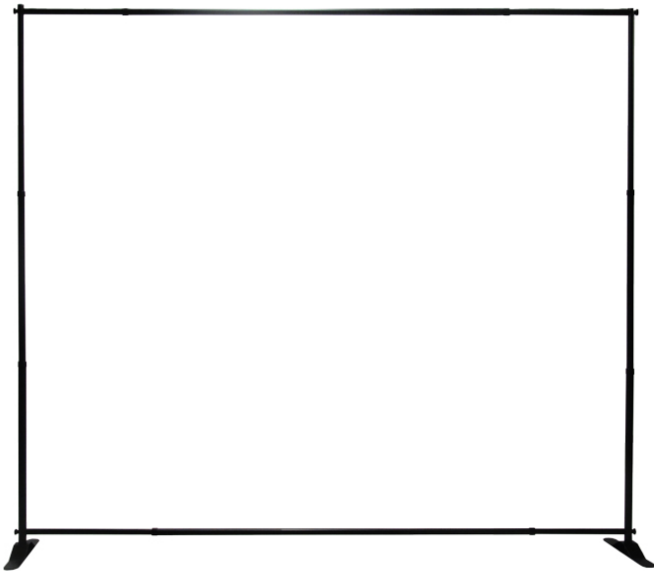


SLIDER FABRIC DISPLAY 8' X 8'



Product Features

This large banner frame is a great alternative to standard pop up backwall displays. The Slider can adjust from an 8' x 8' display. Pole pockets are sewn to the top and bottom of fabric print. The frame is constructed out of telescopic poles that "slide", allowing large graphics to be used on the display.

Display Dimension	96"W x 96"H
-------------------	-------------

Graphic Size	96"W x 94"H
--------------	-------------

Graphic Material

Fabric

Fire Certificate Style Number

5633-C38

Graphic Finishing

4 1/2" pole pockets top and bottom

Construction

Two 3"x 16" Formed Steel Bases (available in Black)

Aluminum telescopic poles

Weights - Dimensions

Shipping Weight	16 lbs
-----------------	--------

Shipping Dimensions	41"x 5"x 4"
---------------------	-------------

Package Includes

(1) Instructions

(2) Bases

(4) Screw knobs

(2) Upright poles w/screws

(2) Top/Bottom poles

Warranty

1 Year on Stand

1 Year on Graphic

Graphic Specification

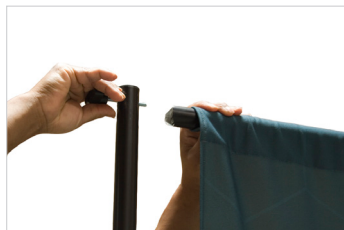
96"W x 94"H

Graphic Turnaround Time is 2 business days for up to 2 sets

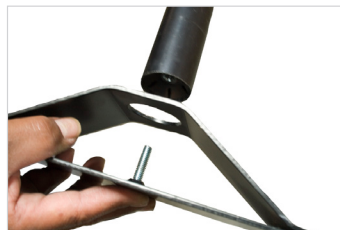


17.5" Deep

Sturdy Steel "Bridge" Support Base.



Clutch lock offers secure horizontal and vertical adjustments.



*Shown with optional finishing. Extra pole pockets added to left and right sides of graphic.